

Chapel Trail Elementary School



Address: 19595 TAFT STREET, PEMBROKE PINES 33029
 Location Num: 2961
 Board District: 2
 Board Member: Torey Alston
 ADEFP Budget: \$5,144,043
 Total Facilities Budget (Sum of Projects): \$4,538,436

PRIMARY RENOVATIONS P.001732 Chapel Trail ES - SMART Program Renovations

CURRENT PHASE

5-Construction

RISK LEVEL



PROJECT UPDATE

110 b in progress, All Scope is completed.

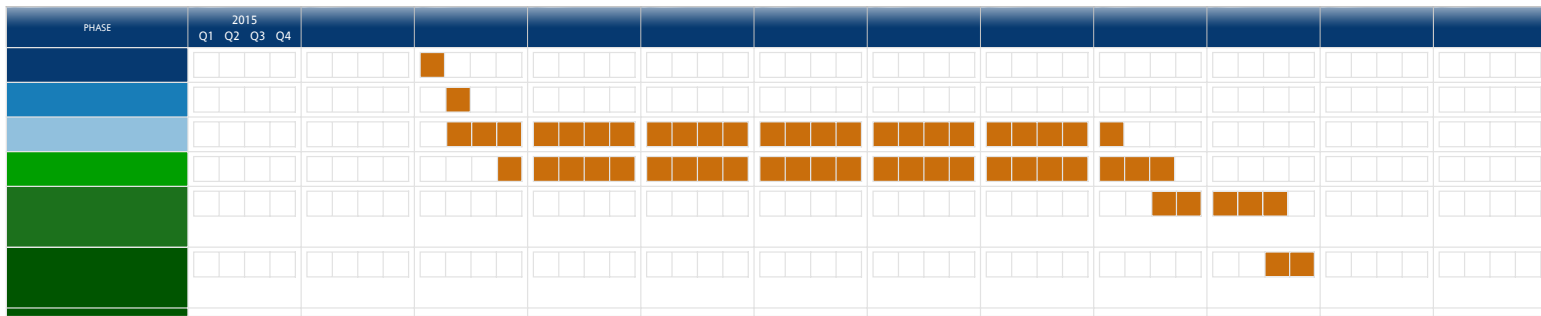
PROJECT SCOPE

Building Envelope Improvements & HVAC Improvements, Walkway replacement

BUDGET

	Current Budget	Actuals	Remaining Budget
Design	\$328,444	\$304,154	\$24,290
Construction	\$3,168,724	\$3,122,756	\$45,968
Direct Purchase	\$573,157	\$553,885	\$19,272
Construction Mgmt	\$325,713	\$325,713	\$0
Contingency	\$137,518		\$137,518
Consultants	\$4,880		\$4,880
Project Total:	\$4,538,436	\$4,306,508	\$231,928

FLAG: SCHEDULE, Reason:Owner Delays



SCHOOL CHOICE ENHANCEMENT (SCEP)

CURRENT PHASE

COMPLETE

DELIVERED

Student laptops, Stage curtains, Bus loop shade, Shade structure

BUDGET

\$100,000

ATHLETICS

✓ COMPLETE

SCOPE
NULL

MUSIC

✓ COMPLETE

SCOPE
280 Instruments Delivered

TECHNOLOGY

✓ COMPLETE

SCOPE
324 Items Delivered

TRAFFIC LIGHT SCHEDULE RISK LEVEL INDICATOR



HIGH:
An issue that can impact the project's budget and/or schedule, a resolution is being determined.

MEDIUM:
An issue that may result in risks, causing an impact on the project budget and/or schedule, with a resolution planned and in process.

LOW:
A low-rated issue with little or no impact on the project budget and/or schedule but is still being tracked.