

# SMART PROGRAM

## AT A GLANCE

PUBLISHED AUGUST 2021



### DISTRICT 4



### WHAT'S HAPPENING IN DISTRICT 4

Primary Renovations Snapshot



PROJECT  
PLANNING



HIRE  
DESIGNER



PROJECT  
DESIGN



HIRE  
CONTRACTOR



ACTIVE  
CONSTRUCTION

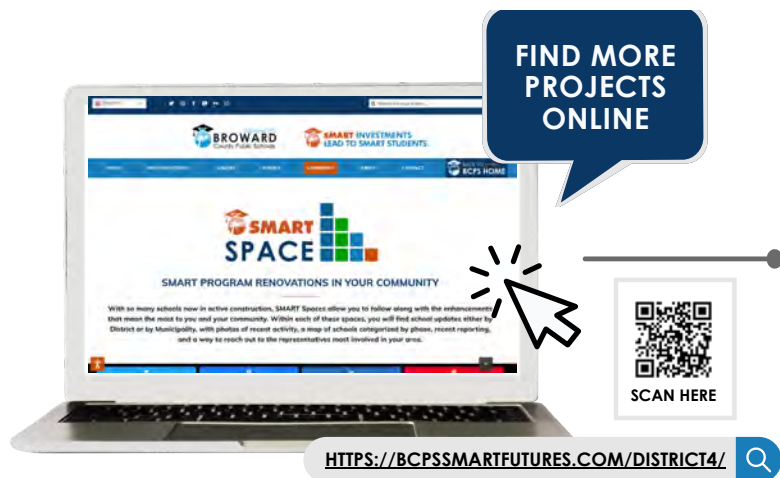


CONSTRUCTION  
CLOSEOUT

# DISTRICT 4

## SMART PROGRAM SMART AT A GLANCE

The SMART Program is improving the educational experience of students and faculty at 232 SMART-funded schools, in the overarching categories of Safety, Music & Art, Athletics, Renovation, and Technology.



### VISIT THE DISTRICT 4 SMART SPACE

to stay updated on the latest activity surrounding the schools in your District.

#### CONTENT TO KEEP YOU INFORMED:

- Latest Photos
- Status of Renovations
- Reports & Publications
- Meetings & Events



## SCHOOL CHOICE ENHANCEMENT PROGRAM (SCEP)

**32** DISTRICT 4 SCEP PROJECTS UNDERWAY OR COMPLETE

**17** COMPLETE

**13** IMPLEMENTATION

**2** PLANNING/DESIGN

As part of the School Choice Enhancement Program, schools are allocated \$100,000 to spend on custom improvements to their campuses and curriculums.



### SPOTLIGHT ON SCEP CORAL SPRINGS MIDDLE SCHOOL

All School Choice Enhancement Program items selected by Coral Springs Middle School have been delivered, marking the completion of the Program at the school. Coral Springs Middle, like all schools in the Program, was allocated \$100,000 to spend on items that would enhance the campus and the educational experience of its students. The items delivered range from classroom necessities such as a Recordex, laptops, laptop carts and adaptors, to assistance for school faculty like an Aiphone intercom and golf carts, as well as items beneficial for the entire school community, such as a digital marquee.



GOLF CARTS



LAPTOPS



AIPHONE

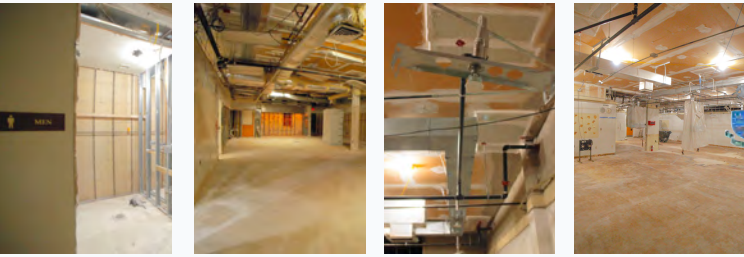


DIGITAL MARQUEE



PUBLISHED AUGUST 2021

## FEATURED PRIMARY RENOVATIONS



### CORAL SPRINGS HIGH SCHOOL

Renovations have begun in the kitchen and Culinary Lab with the demolition of the pre-existing space.



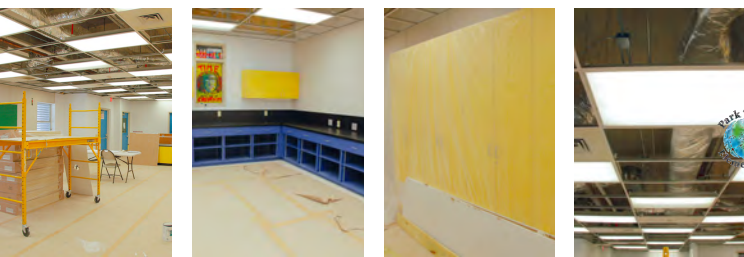
### J.P. TARAVELLA HIGH SCHOOL

HVAC and roofing improvements are underway in several buildings, while Buildings 1 and 2 are being repainted.



### MAPLEWOOD ELEMENTARY SCHOOL

Work on the school's fire sprinkler system has been completed. Roofing repairs and ADA restroom renovations are in progress.



### PARK TRAILS ELEMENTARY SCHOOL

The Art Room is under total renovation with electrical and HVAC improvements completed, and new furnishings underway.



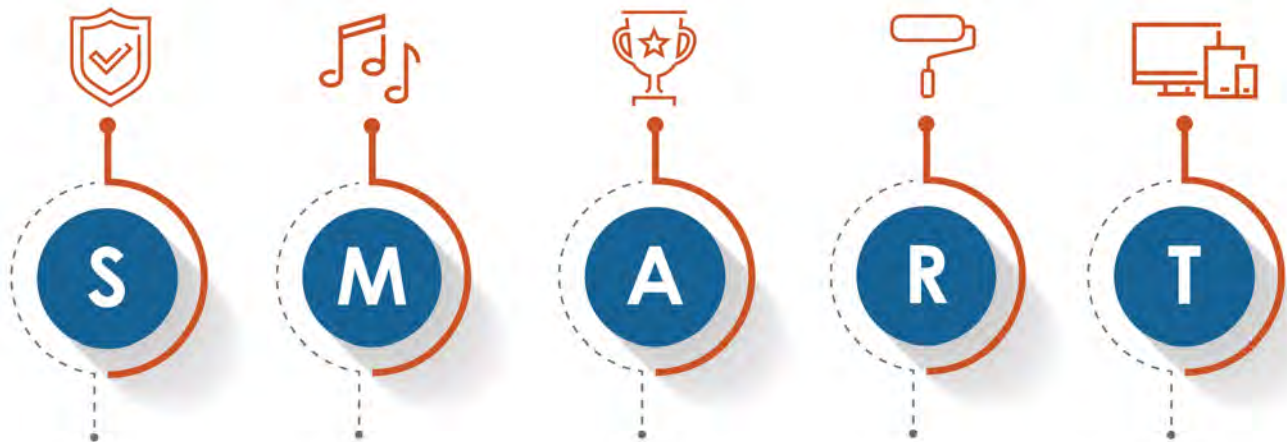
### RAMBLEWOOD MIDDLE SCHOOL

The existing roof has been demolished as roofing repairs continue. Electrical repairs to the kitchen have been completed, and ADA restroom improvements are in progress.



We would like to thank our SMART Team and the contractors who have remained hard at work on our school campuses throughout the Covid-19 pandemic. Though we remain committed to providing BCPS students and staff with enhanced learning environments, the health and safety of our team remains a priority. All guidelines provided by the CDC and other health professionals are currently in place to ensure that we can continue to strive for a SMART Future under the safest possible conditions. We appreciate the support of the community as we aim to follow through with our commitments during this time.

# SMART BY THE NUMBERS | DISTRICT 4



## SAFETY

**COMPLETE**

\$26 Million invested in Single Point of Entry projects

## MUSIC & ART

**COMPLETE**

8,110 items delivered

## ATHLETICS

**COMPLETE**

1 Track  
4 Weight Rooms

## RENOVATION

**5 PROJECTS COMPLETE**

18 projects in Construction

## TECHNOLOGY

**COMPLETE**

14,950 items delivered



Established 1915

**BROWARD**  
County Public Schools



### STAY INFORMED!

VISIT [BCPSSMARTFUTURES.COM](http://BCPSSMARTFUTURES.COM)

### EMAIL

[SMARTFUTURES@BROWARDSCHOOLS.COM](mailto:SMARTFUTURES@BROWARDSCHOOLS.COM)

### FOLLOW US!

@BCPS SMART

/BCPSSMART

@BCPS SMART

## 18 PROJECTS IN CONSTRUCTION

- **Broadview Elementary School**
- **Challenger Elementary School**
- Coral Glades High School
- **Coral Park Elementary School**
- **Coral Springs High School**
- Coral Springs Middle School
- Coral Springs Pre K-8
- Country Hills Elementary School
- Eagle Ridge Elementary School
- **Forest Glen Middle School**
- **Forest Hills Elementary School\*\***
- Heron Heights Elementary School
- **J.P. Taravella High School**
- Marjory Stoneman Douglas High School New Addition (non-SMART Funded)\*\*
- **Maplewood Elementary School\*\***
- Millennium 6-12 Collegiate Academy
- Morrow Elementary School
- North Lauderdale Pre K 8
- Park Springs Elementary School
- **Park Trails Elementary School**
- Parkside Elementary School
- **Pinewood Elementary School**
- **Ramblewood Elementary School**
- **Ramblewood Middle School**
- **Riverglades Elementary School**
- Riverside Elementary School
- Sawgrass Springs Middle School
- Silver Lakes Middle School
- **Tamarac Elementary School Phase 1/ Tamarac Elementary School Phase 2\*\***
- **Westchester Elementary School**
- Westglades Middle School

\* **Bold schools are in construction**

Green circles indicate complete

\*\* The scopes of work for some projects have been separated to improve timing and efficiency. This may lead to a school being counted more than once in data provided.