



Tropical Elementary School

1500 SW 66 AVENUE, PLANTATION 33317

Location Num	0731
Board District	6
Board Member	Laurie Rich Levinson
ADEFP Budget*	\$1,344,000
Total Facilities Budget	\$1,012,000

***NOTE** This quarter reflects the Adopted District Educational Facilities Plan total budget as approved by SBBC in September 2019. This budget includes Technology improvements and Musical Instruments Replacements which are not included in this section of the report.

- All dates are based on calendar year. SMART funded projects are included.

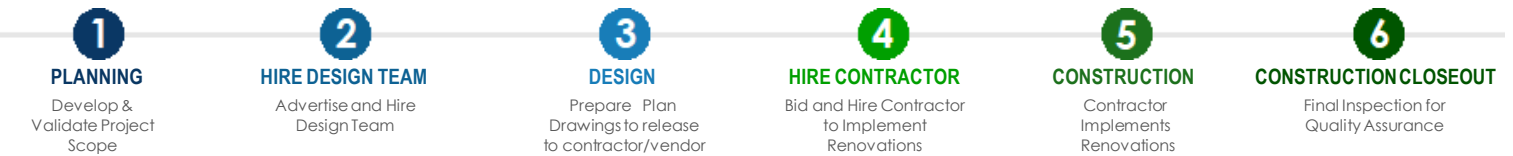
- Projects without expenditures to date may not show up in the "Financially Active Project Detail Schedule".

PRIMARY PROJECTS CURRENT STATUS: Hire Contractor

Primary Renovation: Contractor procurement in progress.

School Choice Enhancements: Proposals are being coordinated with multiple entities to ensure the best pricing is obtained.

SMART Facilities Update By Project



Primary Renovation

Phase: **5% Complete**

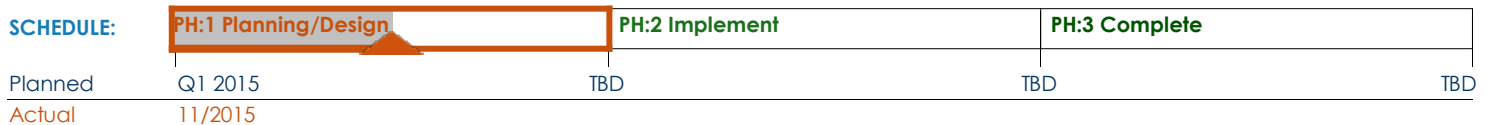


SCOPE:	BUDGET:
Bldg Envelope Impr. (Roof, Window, Ext Wall, etc.)	\$55,000
Conversion of Existing Space to Music and/or Art Lab(s)	\$169,000
Fire Alarm	\$252,000
Fire Sprinklers	\$33,000
HVAC Improvements	\$166,000
Media Center improvements	\$237,000

FLAG:
COMMENTS:

School Choice Enhancements*

Phase: **50% Complete**



SCOPE:	BUDGET:
School Choice Enhancement	\$100,000

FLAG:
COMMENTS:
Planned date for Implementation phase shown as TBD will be provided after voting process has been completed by the school community.

*SCEP projects follows a three-phase design process that begins with planning/design, followed by implementation and finally completion when all items have been delivered and installed.